

INDUSTRIAL STEAM BOILER CORPORATION

- ✓ FIELD ERECTED OR FACTORY PACKAGED WITH GAS, OIL OR COMBO
- ✓ ASME & UL CERTIFICATIONS
- ✓ HIGH EFFICIENCY
- ✓ BEST WARRANTIES IN THE INDUSTRY
- ✓ ISB-3L SERIES IS SPECIALLY DESIGNED FOR LOW CEILING HEIGHTS
- ✓ OPTIMIZED HEAT TRANSFER RATE

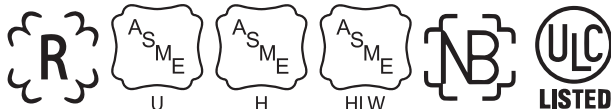
3-PASS WET BACK FIRETUBE BOILER

SERIES ISB3 SERIES ISB3L

4-PASS WET BACK FIRETUBE BOILER

SERIES ISB4

LOW PRESSURE STEAM (15PSI)
HOT WATER (UP TO 160 PSI)



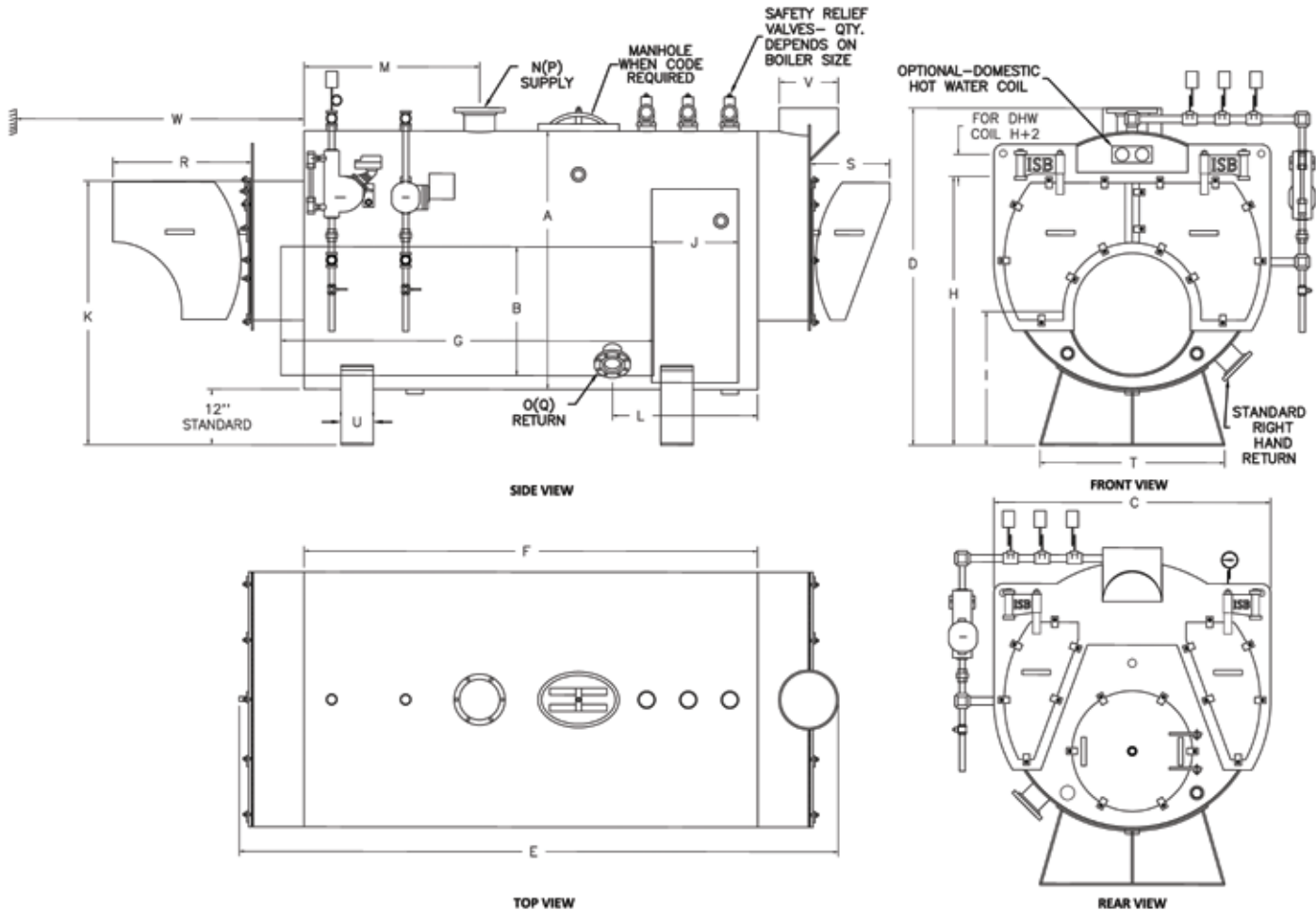
W: WWW.ISBNYC.COM

E: INFO@ISBNYC.COM

ISB3 PERFORMANCE RATINGS

Boiler Size		HP	20	32	40SP	40	50	60	70	80	90	100	125	150	175	200	250	300	350	400	450	500	600
Gross Output	Steam	LBS/HR	690	1,104	1,380	1,380	1,725	2,070	2,415	2,760	3,105	3,450	4,313	5,175	6,038	6,900	8,625	10,350	12,075	13,800	15,525	17,250	20,700
	Steam/Water	MBH	670	1,071	1,339	1,339	1,674	2,009	2,343	2,678	3,013	3,348	4,184	5,021	5,858	6,695	8,369	10,043	11,716	13,390	15,064	16,738	20,085
Net Ratings	Steam	MBH	520	832	1,040	1,040	1,299	1,559	1,819	2,079	2,339	2,599	3,249	3,898	4,548	5,198	6,497	7,797	9,096	10,396	11,695	12,995	15,594
	Water	MBH	582	931	1,164	1,164	1,455	1,747	2,038	2,329	2,620	2,911	3,639	4,366	5,094	5,822	7,277	8,733	10,188	11,643	13,099	14,554	17,465
	Steam	SQ. FT	2,166	3,465	4,332	4,332	5,415	6,497	7,580	8,663	9,746	10,829	13,536	16,244	18,951	21,658	27,073	32,487	37,902	43,317	48,731	54,146	64,975
Firing Rate	Natural Gas	CFH	807	1,290	1,613	1,613	2,017	2,420	2,823	3,227	3,630	4,033	5,041	6,050	7,058	8,066	10,083	12,099	14,116	16,133	18,149	20,166	24,199
	# 2 Oil	GPH	6	9	12	12	14	17	20	23	26	29	36	43	50	58	72	86	101	115	130	144	173
	#6 Oil	GPH	5	9	11	11	13	16	19	22	24	27	34	40	47	54	67	81	94	108	121	134	161
Fireside Heating Surface	SQ.FT	100	160	200	200	250	300	350	400	450	500	625	750	875	1,000	1,250	1,500	1,750	2,000	2,250	2,500	3,000	
Furnace Volume	CU. FT	14	19	25	29	33	38	44	49	53	57	77	89	101	103	119	134	204	227	249	304	349	
Heat Release Rate	MBH/FT^3	59	68	66	56	60	63	64	66	68	71	65	68	70	78	85	90	69	71	73	66	69	
Water Contents	GALS	175	266	334	224	289	363	383	450	518	628	601	722	1051	1008	1290	1572	1762	2037	2312	2501	3031	
Approx. Shipping Weight	LBS	2,800	3,800	5,200	5,150	5,500	5,900	6,800	7,500	8,000	9,524	10,700	12,000	13,526	14,100	16,400	18,800	23,500	26,000	28,500	32,500	36,100	
Approx. Operating Weight	LBS	4,226	5,977	7,160	7,020	7,917	8,931	9,994	11,256	12,328	14,768	15,718	18,027	22,300	22,520	27,175	31,930	38,216	43,008	47,801	53,384	61,413	
Approx. Flooded Weight	LBS	4,576	6,494	8,185	8,048	8,943	10,169	11,797	13,317	14,647	17,293	19,321	22,370	25,645	27,402	33,190	39,078	49,516	55,855	62,195	63,314	73,199	

* ALL DIMENSIONS ARE APPROXIMATE.



*6" HIGH SKIDS ARE AVAILABLE AS AN OPTION.

ISB3 DIMENSIONS

Boiler Size-HP		20	32	40SP	40	50	60	70	80	90	100	125	150	175	200	250	300	350	400	450	500	600
A	Inside Diameter-Shell	45	45	45	55	55	55	63	63	63	63	72	72	72	84	84	84	96	96	96	108	108
B	Inside Diameter-Furnace	21	21	21	27	27	27	30	30	30	30	37	37	37	37	37	37	47	47	47	57	57
C	Boiler width-Overall	48	48	48	60	60	60	68	68	68	68	77	77	77	89	89	89	101	101	101	113	113
D	Boiler Height-Overall	63	63	63	73	73	73	82	82	82	82	91	91	91	103	103	103	115	115	115	127	127
E	Boiler Length-Overall	77	99	120	91	108	122	114	125	136	146	134	154	174	146	171	196	210	232	254	217	247
F	Length of Shell	50	72	93	62	76	91	80	91	102	112	101	120	139	111	136	161	164	186	208	164	194
G	Length of Furnace	34	56	77	44	58	73	62	73	84	94	83	102	121	80	105	130	133	155	177	128	158
H	Normal Water Line	49	49	49	58	58	58	63	63	63	63	73	73	73	80	80	80	88	88	88	104	104
I	C.L. of Furnace	27	27	27	29	29	29	31	31	31	31	35	35	35	35	35	35	42	42	42	47	47
J	Length-Reversing Chamber	17	17	17	19	19	19	19	19	19	19	19	19	19	32	32	32	32	32	32	38	38
K	Height-Front Smoke Box	48	48	48	57	57	57	62	62	62	62	72	72	72	79	79	79	87	87	87	103	103
L	Return Location	28	28	28	35	35	35	35	35	35	42	48	48	52	48	48	48	55	55	55	60	60
M	Supply Location	20	25	29	29	29	29	29	29	29	42	33	33	42	37	37	37	67	67	67	64	64
N	Steam Supply Size (NPS)	6	6	6	6	6	6	6	6	6	8	8	8	8	8	10	10	10	10	10	12	12
O	Water Supply Size (NPS)	3	3	3	3	3	3	4	4	4	4	4	6	6	6	6	6	6	8	8	8	8
P	Steam Return Size (NPS)	4	4	4	4	4	4	4	4	4	4	4	4	4	4	4	4	6	6	6	6	6
Q	Water Return Size (NPS)	3	3	3	3	3	3	4	4	4	4	4	6	6	6	6	6	6	8	8	8	8
R	Front Door Swing	21	21	21	28	28	28	32	32	32	32	37	37	37	43	43	43	49	49	49	55	55
S	Rear Door Swing	20	20	20	16	16	16	20	20	20	21	26	26	26	33	33	33	34	34	34	45	45
T	Length of Saddle	38	38	38	40	40	40	48	48	48	48	56	56	56	62	62	62	76	76	76	94	94
U	Width of Saddle	6	6	6	7	7	7	8	8	8	8	8	8	8	8	8	8	10	10	10	12	12
V	Vent Diameter	12	12	12	12	12	12	14	16	16	16	18	18	18	20	20	20	26	26	26	32	32
W	Tube Pull	50	72	93	62	76	91	80	91	102	112	101	120	139	111	136	161	164	186	208	164	194

*SEE DIAGRAM ON PREVIOUS PAGE.

OPTIONAL TANKLESS DOMESTIC HOT WATER COIL

FAMILIES OR BATH	8	12	16	24	34	42	50	60	70	90	100	120	130	140	150	160	180	200	225	250	300	350	400
RATING GPH 40F TO 140F WITH B.W. AT 180	400	480	560	640	720	840	960	1080	1200	1400	1600	1800	2000	2200	2400	2600	2880	3160	3440	3720	4000	4400	4800

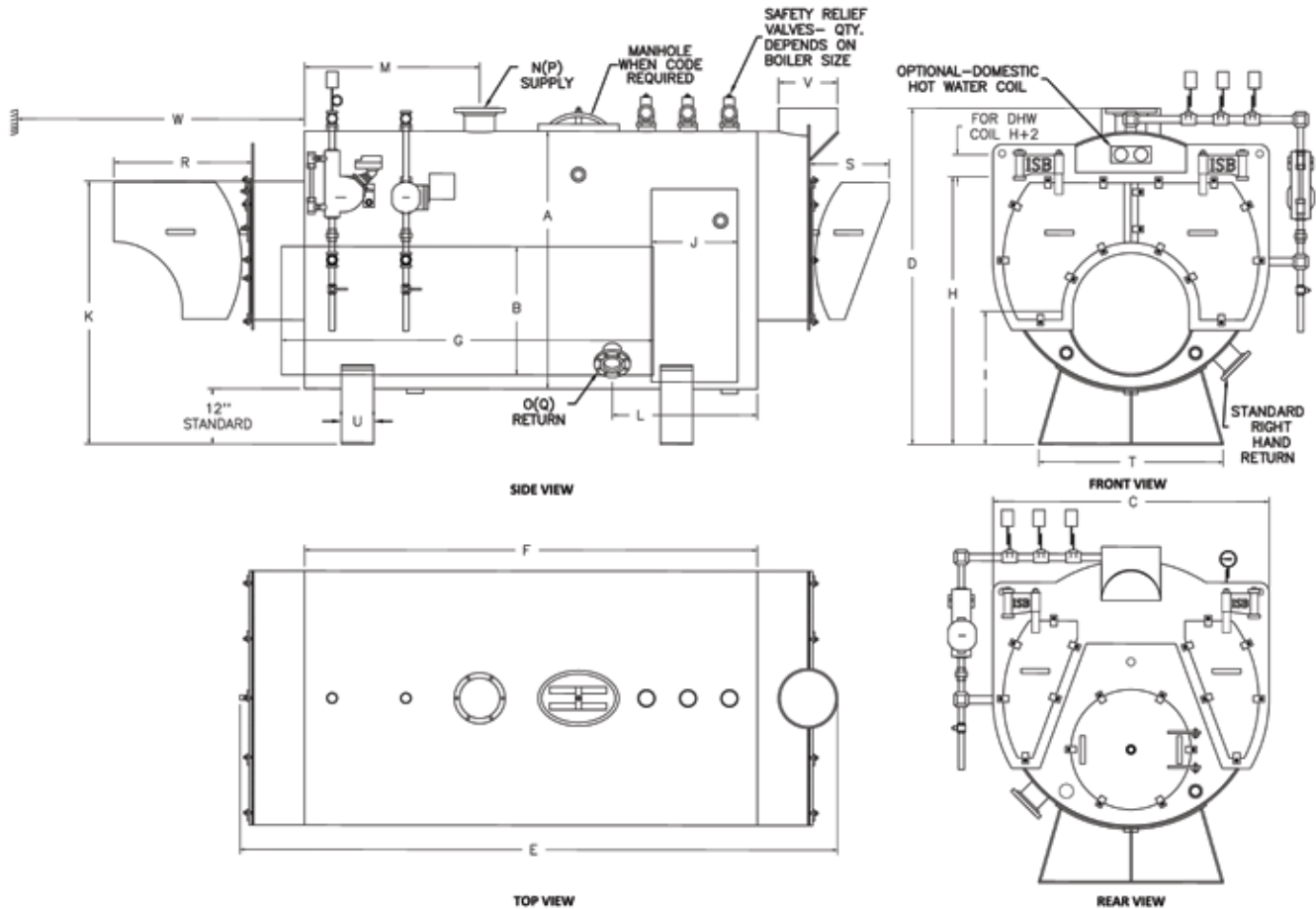
NOTES:

- ALL DIMENSIONS ARE IN INCHES CERTIFIED DRAWINGS ARE AVAILABLE UPON REQUEST.
- DIMENSIONS AND TRIM PACKAGE SUBJECT TO CHANGE WITHOUT NOTICE.
- DESIGNED AND BUILT IN STRICT ACCORDANCE WITH ASME.

ISB3L PERFORMANCE RATINGS

Boiler Size		HP	70	80	90	100	125	150	175	200	250	300	350	400	450	500	600
Gross Output	Steam	LBS/HR	2,415	2,760	3,105	3,450	4,313	5,175	6,038	6,900	8,625	10,350	12,075	13,800	15,525	17,250	20,700
	Steam/Water	MBH	2,343	2,678	3,013	3,348	4,184	5,021	5,858	6,695	8,369	10,043	11,716	13,390	15,064	16,738	20,085
Net Ratings	Steam	MBH	1,819	2,079	2,339	2,599	3,249	3,898	4,548	5,198	6,497	7,797	9,096	10,396	11,695	12,995	15,594
	Water	MBH	2,038	2,329	2,620	2,911	3,639	4,366	5,094	5,822	7,277	8,733	10,188	11,643	13,099	14,554	17,465
	Steam	SQ.FT	7,580	8,663	9,746	10,829	13,536	16,244	18,951	21,658	27,073	32,487	37,902	43,317	48,731	54,146	64,975
Firing Rate	Natural Gas	CFH	2,823	3,227	3,630	4,033	5,041	6,050	7,058	8,066	10,083	12,099	14,116	16,133	18,149	20,166	24,199
	# 2 Oil	GPH	20	23	26	29	36	43	50	58	72	86	101	115	130	144	173
	#6 Oil	GPH	19	22	24	27	34	40	47	54	67	81	94	108	121	134	161
Fireside Heating Surface		SQ.FT	350	400	450	500	625	750	875	1,000	1,250	1,500	1,750	2,000	2,250	2,500	3,000
Furnace Volume		CU. FT	43	48	53	57	67	78	101	113	137	162	150	165	181	270	315
Heat Release Rate		MBH/FT ³	66	67	69	71	75	77	70	71	74	75	94	98	100	75	77
Water Contents		GALS	371	433	484	628	790	924	1,051	1,206	1,314	1,619	2,220	2,545	2,743	3,540	4,261
Approx. Shipping Weight		LBS	7,151	7,687	9,342	9,524	10,941	12,413	13,526	14,716	17,093	19,533	23,346	25,787	28,228	35,356	39,342
Approx. Operating Weight		LBS	10,249	11,304	13,383	14,768	17,537	20,127	22,300	24,789	28,068	33,056	41,887	47,041	51,132	64,915	74,917
Approx. Flooded Weight		LBS	12,376	13,737	16,218	17,293	20,647	24,131	25,645	28,584	33,359	39,389	47,623	53,552	59,481	73,566	85,231

* ALL DIMENSIONS ARE APPROXIMATE.



*6" HIGH SKIDS ARE AVAILABLE AS AN OPTION.

ISB3L DIMENSIONS

Boiler Size-HP		70	80	90	100	125	150	175	200	250	300	350	400	450	500	600
A	Inside Diameter-Shell	55	55	55	63	63	63	72	72	72	72	84	84	84	96	96
B	Inside Diameter-Furnace	27	27	27	30	30	30	37	37	37	37	37	37	37	47	47
C	Boiler Width-Overall	60	60	60	68	68	68	77	77	77	77	89	89	89	101	101
D	Boiler Height-Overall	73	73	73	82	82	82	91	91	91	91	103	103	103	115	115
E	Boiler Length-Overall	138	153	168	146	172	199	174	193	231	270	231	256	281	282	326
F	Length of Shell	104	119	134	112	138	165	139	158	196	235	185	210	235	229	273
G	Length of Furnace	86	101	116	94	120	147	121	140	178	217	154	179	204	198	242
H	Normal Water Line	58	58	58	63	63	63	73	73	73	73	80	80	80	88	88
I	C.L. of Furnace	29	29	29	31	31	31	35	35	35	35	35	35	35	42	42
J	Length-Reversing Chamber	19	19	19	19	19	19	19	19	19	19	32	32	32	32	32
K	Height-Front Smoke Box	57	57	57	62	62	62	72	72	72	72	79	79	79	87	87
L	Return Location	35	35	35	42	42	42	52	52	52	52	52	52	52	55	55
M	Supply Location	37	37	37	42	42	42	42	42	42	42	60	60	60	67	67
N	Steam Supply Size (NPS)	6	6	6	8	8	8	8	8	10	10	10	10	10	12	12
O	Water Supply Size (NPS)	4	4	4	4	4	6	6	6	6	6	6	8	8	8	8
P	Steam Return Size (NPS)	4	4	4	4	4	4	4	4	4	6	6	6	6	6	6
Q	Water Return Size (NPS)	4	4	4	4	4	6	6	6	6	6	6	8	8	8	8
R	Front Door Swing	28	28	28	32	32	32	37	37	37	37	43	43	43	49	49
S	Rear Door Swing	16	16	16	21	21	21	26	26	26	26	33	33	33	34	34
T	Length of Saddle	40	40	40	48	48	48	56	56	56	56	62	62	62	76	76
U	Width of Saddle	7	7	7	8	8	8	8	8	8	8	10	10	10	12	12
V	Vent Diameter	14	16	16	16	18	18	18	20	20	20	26	26	26	32	32
W	Tube Pull	104	119	134	112	138	165	139	158	196	235	185	210	235	229	273

*SEE DIAGRAM ON PREVIOUS PAGE.

OPTIONAL TANKLESS DOMESTIC HOT WATER COIL

FAMILIES OR BATH	8	12	16	24	34	42	50	60	70	90	100	120	130	140	150	160	180	200	225	250	300	350	400
RATING GPH 40F TO 140F WITH B.W. AT 180	400	480	560	640	720	840	960	1080	1200	1400	1600	1800	2000	2200	2400	2600	2880	3160	3440	3720	4000	4400	4800

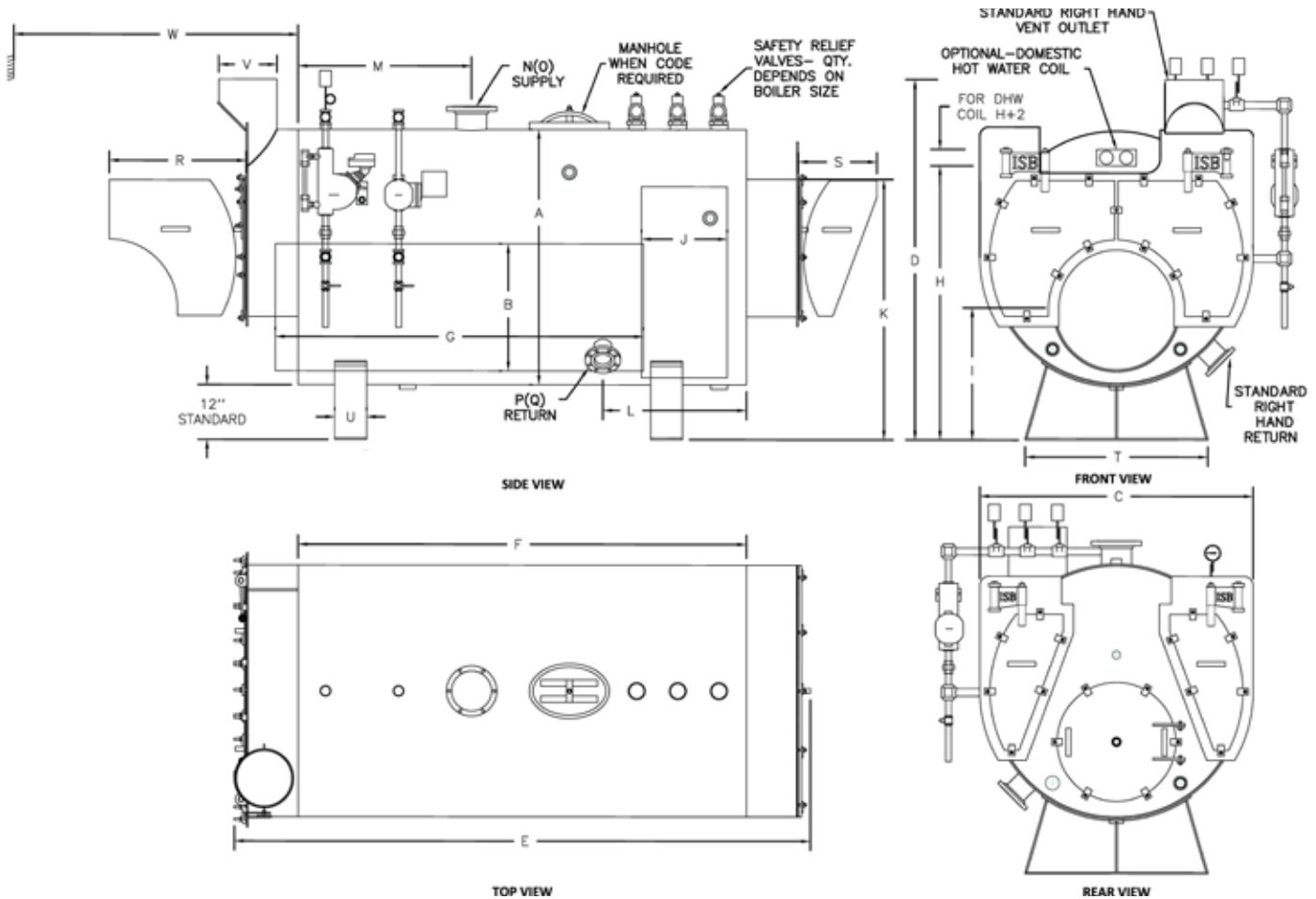
NOTES:

- ALL DIMENSIONS ARE IN INCHES CERTIFIED DRAWINGS ARE AVAILABLE UPON REQUEST.
- DIMENSIONS AND TRIM PACKAGE SUBJECT TO CHANGE WITHOUT NOTICE.
- DESIGNED AND BUILT IN STRICT ACCORDANCE WITH ASME.

ISB4 PERFORMANCE RATINGS

Boiler Size		HP	20	32	40SP	40	50	60	70	80	90	100	125	150	175	200	250	300	350	400	450	500	600
Gross Output	Steam	LBS/HR	690	1,104	1,380	1,380	1,725	2,070	2,415	2,760	3,105	3,450	4,313	5,175	6,038	6,900	8,625	10,350	12,075	13,800	15,525	17,250	20,700
	Steam/Water	MBH	670	1,072	1,339	1,339	1,674	2,009	2,343	2,678	3,013	3,348	4,184	5,021	5,858	6,695	8,369	10,043	11,716	13,390	15,064	16,738	20,085
Net Ratings	Steam	MBH	506	893	1,011	1,011	1,299	1,559	1,819	2,079	2,339	2,599	3,249	3,898	4,548	5,198	6,497	7,797	9,096	10,396	11,695	12,995	15,594
	Water	MBH	582	932	1,164	1,164	1,455	1,747	2,038	2,329	2,620	2,911	3,639	4,366	5,094	5,822	7,277	8,733	10,188	11,643	13,099	14,554	17,465
	Steam	SQ. FT	2,106	3,365	4,211	4,211	5,415	6,497	7,580	8,663	9,746	10,829	13,536	16,244	18,951	21,658	27,073	32,487	37,902	43,317	48,731	54,146	64,975
Firing Rate	Natural Gas	CFH	788	1,261	1,575	1,575	1,969	2,363	2,757	3,151	3,544	3,938	4,923	5,907	6,892	7,876	9,846	11,815	13,784	15,753	17,722	19,691	23,629
	# 2 Oil	GPH	6	9	12	12	14	17	20	23	25	28	35	42	49	56	70	84	98	113	127	141	169
	#6 Oil	GPH	5	9	11	11	13	16	18	21	24	26	33	39	46	53	66	79	92	105	118	131	158
Fireside Heating Surface		SQ.FT	100	160	200	200	250	300	350	400	450	500	625	750	875	1,000	1,250	1,500	1,750	2,000	2,250	2,500	3,000
Furnace Volume		CU. FT	14	19	25	29	33	38	44	49	53	65	77	89	95	103	119	134	204	227	249	304	349
Heat Release Rate		MBH/FT ³	58	66	64	54	60	62	63	64	67	61	64	66	73	76	83	88	68	69	71	65	68
Water Contents		GALS	175	266	334	224	289	363	383	450	518	473	601	722	873	1,008	1,290	1,572	1,762	2,037	2,312	2,501	3,031
Approx. Shipping Weight		LBS	2,800	3,800	5,200	5,150	5,500	5,900	6,800	7,500	8,000	9,300	10,700	12,000	13,200	14,100	16,400	18,800	23,500	26,000	28,500	32,500	36,100
Approx. Operating Weight		LBS	4,226	5,977	7,160	7,020	7,917	8,931	9,994	11,256	12,328	13,246	15,718	18,027	20,489	22,520	27,175	31,930	38,216	43,008	47,801	53,384	61,413
Approx. Flooded Weight		LBS	4,576	6,494	8,185	8,048	8,943	10,169	11,797	13,317	14,647	16,172	19,321	22,370	24,827	27,402	33,190	39,078	49,516	55,855	62,195	63,314	73,199

* ALL DIMENSIONS ARE APPROXIMATE.



*6" HIGH SKIDS ARE AVAILABLE AS AN OPTION.

ISB4 DIMENSIONS

Boiler Size-HP		20	32	40SP	40	50	60	70	80	90	100	125	150	175	200	250	300	350	400	450	500	600
A	Inside Diameter-Shell	45	45	45	55	55	55	63	63	63	72	72	72	84	84	84	84	96	96	96	108	108
B	Inside Diameter-Furnace	21	21	21	27	27	27	30	30	30	37	37	37	37	37	37	37	47	47	47	57	57
C	Boiler width-Overall	48	48	48	60	60	60	68	68	68	77	77	77	89	89	89	89	101	101	101	113	113
D	Boiler Height-Overall	63	63	63	73	73	73	82	82	82	91	91	91	103	103	103	103	115	115	115	127	127
E	Boiler Length-Overall	77	99	120	91	108	122	114	125	136	116	135	154	134	146	171	196	210	232	254	217	247
F	Length of Shell	50	72	93	62	76	91	80	91	102	82	101	120	99	111	136	161	164	186	208	164	194
G	Length of Furnace	34	56	77	44	58	73	62	73	84	64	83	102	68	80	105	130	133	155	177	128	158
H	Normal Water Line	49	49	49	58	58	58	63	63	63	73	73	73	80	80	80	80	88	88	88	104	104
I	C.L. of Furnace	27	27	27	29	29	29	31	31	31	35	35	35	35	35	35	35	42	42	42	47	47
J	Length-Reversing Chamber	17	17	17	19	19	19	19	19	19	19	19	19	32	32	32	32	32	32	32	38	38
K	Height-Rear Smoke Box	48	48	48	57	57	57	62	62	62	72	72	72	79	79	79	79	87	87	87	103	103
L	Return Location	28	28	28	35	35	35	35	35	35	35	48	48	48	48	48	48	55	55	55	60	60
M	Supply Location	20	25	29	29	29	29	29	29	29	29	33	33	37	37	37	37	67	67	67	64	64
N	Steam Supply Size (NPS)	6	6	6	6	6	6	6	6	6	8	8	8	8	8	10	10	10	10	10	12	12
O	Water Supply Size (NPS)	3	3	3	3	3	3	4	4	4	4	4	6	6	6	6	6	6	8	8	8	8
P	Steam Return Size (NPS)	3	3	3	4	4	4	4	4	4	4	4	4	4	4	6	6	6	6	6	6	6
Q	Water Return Size (NPS)	3	3	3	3	3	3	4	4	4	4	4	6	6	6	6	6	6	8	8	8	8
R	Front Door Swing	21	21	21	28	28	28	32	32	32	37	37	37	43	43	43	43	49	49	49	55	55
S	Rear Door Swing	20	20	20	16	16	16	21	21	21	26	26	26	33	33	33	33	34	34	34	45	45
T	Length of Saddle	38	38	38	40	40	40	48	48	48	56	56	56	62	62	62	62	76	76	76	94	94
U	Width of Saddle	6	6	6	7	7	7	8	8	8	8	8	8	8	8	8	8	10	10	10	12	12
V	Vent Diameter	12	12	12	12	12	12	12	12	12	14	14	16	18	18	20	20	24	24	24	24	24
W	Tube Pull	50	72	93	62	76	91	80	91	102	82	101	120	99	111	136	161	164	186	208	164	194

*SEE DIAGRAM ON PREVIOUS PAGE.

OPTIONAL TANKLESS DOMESTIC HOT WATER COIL

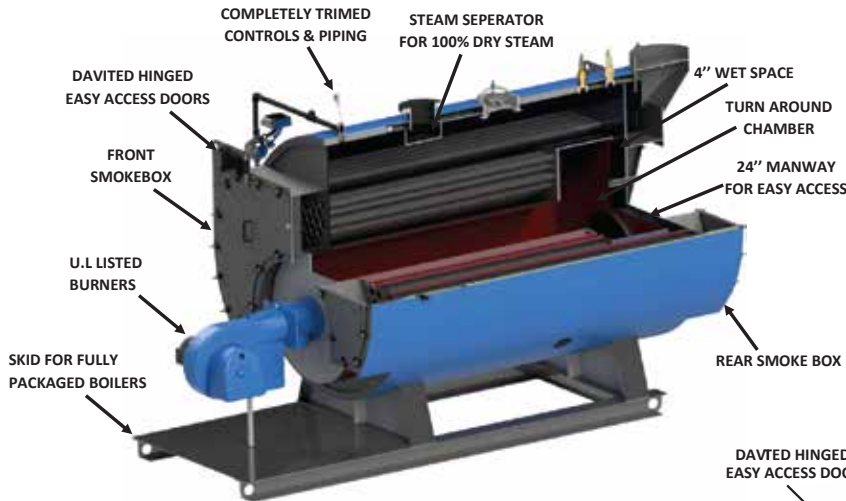
FAMILIES OR BATH	8	12	16	24	34	42	50	60	70	90	100	120	130	140	150	160	180	200	225	250	300	350	400
RATING GPH 40F TO 140F WITH B.W. AT 180	400	480	560	640	720	840	960	1080	1200	1400	1600	1800	2000	2200	2400	2600	2880	3160	3440	3720	4000	4400	4800

NOTE: OPTIONAL DOMESTIC HOT WATER COIL REQUIRED ADDITIONAL CLEARANCE ON THE REAR OF THE BOILER DEPENDS UPON COIL SIZE.

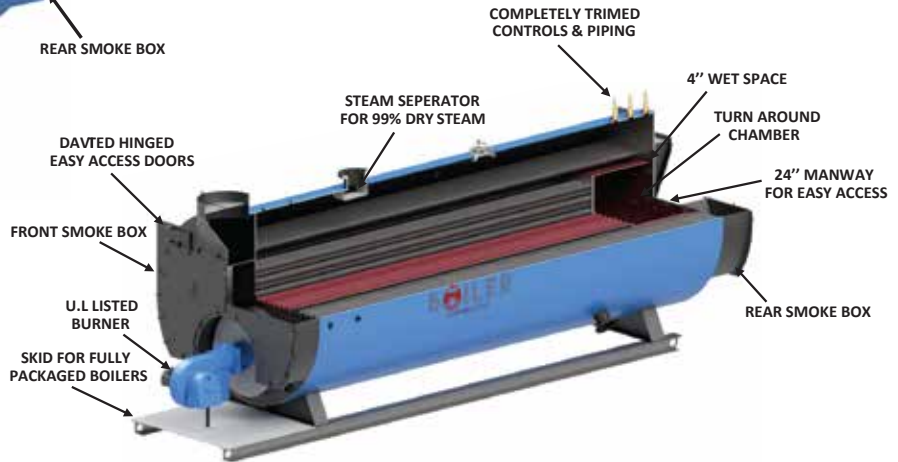
NOTES:

- ALL DIMENSIONS ARE IN INCHES CERTIFIED DRAWING ARE AVAILABLE UPON REQUEST.
- DIMENSIONS AND TRIM PACKAGE SUBJECT TO CHANGE WITHOUT NOTICE.
- DESIGNED AND BUILT AND CERTIFIED IN STRICT ACCORDANCE WITH ASME.

ISB 3/3L BOILER SECTIONAL VIEW



ISB4 BOILER SECTIONAL VIEW



STANDARD TRIM CONTROLS

STEAM

- Operating & Limit Pressure Control
- Low Fire Hold Aquastat
- Modulating Pressure Control (When Applicable)
- Water Column with Gauge Glass Float Type Combination Low Water Cut-off and Pump Control (Optional)
- Probe Type Auxiliary Low Water Cut-Off Float or Probe with Manual Reset (Optional)
- Water Column Drain Valve
- Safety Relief Valve(s) Per ASME Code
- Stack Thermometer
- Steam Pressure Gauge

HOT WATER

- Operating & Limit Temperature Control
- Modulating Temperature Control (When Applicable)
- Low Water Cut-Off Control Float or Probe with Manual Reset
- Combination Pressure, Temperature Gauge
- Safety Relief Valve(s) Per ASME Code
- Stack Thermometer

PACKAGED BOILERS

Industrial Steam Boiler Series ISB3, 3L and 4, Scotch Marine, Horizontal Firetube 3-Pass and 4-Pass packaged, combustion systems are manufactured for use in low-pressure steam (15 PSIG) or hot-water (30 to 160 PSIG), maximum 250°F applications, providing for efficient and low-cost maintenance. Complete packaged units piped, wired and ready for years of reliable low-cost maintenance efficient operation. ASME & UL approved with many brands and different fuels with automatic burners.

FIELD ERECTED BOILERS

Industrial Steam Boiler Series ISB3, 3L and 4, Scotch Marine field erected boilers fill the long-standing need for a quality steel boiler that can be moved into an existing room through available door openings and/or windows. Series ISB3 3-Pass and ISB4 4-Pass boilers are the industry standard for an Advanced Scotch Marine, full water back design and are built with the same high-quality components, workmanship, generous proportions and engineering excellence that are synonymous with all our factory-built packaged boilers.

70 LAMBERT AVENUE COPIAGUE, NY 11726 USA. PH: (718)665-0888; FAX: (718)402-4336

WEBSITE: WWW.ISBNYC.COM

E-MAIL: INFO@ISBNYC.COM